

CHALMERS ARCHITECTURE -  
SPACE FOR HEALTHCARE,  
HOUSING & WORK - NEW  
KAROLINSKA HUDDINSE  
HOSPITAL - A.JODKO -  
TEACHERS P.FRÖST,  
I.MALMQVIST, B.GROSS

PAGE 1

INTRODUCTION

I DESIGNED THIS ADDITION  
WITH REQUIRED UNITS  
ACCORDING TO THE  
PROGRAMME WE WERE GIVEN  
BY THE HOSPITAL TO EXPAND  
THE EXISTING BUILDING. THE  
NEW BUILDING IS LIKE A BIG  
HOUSE OR HOTEL - NOT A  
HOSPITAL - TYING TOGETHER  
THE SPACES WITHIN.  
THE HOSPITAL DESIGN  
INCORPORATES A LARGE  
DEGREE OF FLEXIBILITY BASED

ON CONSTRUCTION GRID AND  
MODULENESS OF SPACE  
DIMENSIONS TO  
ACCOMMODATE FUTURE  
REQUIREMENTS REGARDING  
NEW TECHNOLOGY. THE KEY  
SUSTAINABLE FEATURES :  
CLOSENESS TO PUBLIC  
TRANSPORTATION, POSSIBLE  
BIKE PARKING AND A LOTS OF  
NATURAL DAYLIGHT  
GUARANTEED BY THE  
SLIMNESS OF THE BUILDING.  
THIS DESIGN ALSO ADDED A  
PATIENT HOTEL WITH 90  
APARTMENTS. IT CAN BE USED  
AS HOTEL ROOMS FOR  
HOSPITAL VISITORS, THEIR  
RELATIVES, CONFERENCE  
ATTENDANTS, AS HOSPITAL  
OFFICES AND EVEN AS WARDS

Site

CENTRAL TO THE BUILDING'S  
DESIGN IS ACCESS TO THE  
VIEWS OUTSIDE FROM THE  
ROOMS, INCORPORATING BIG  
AMOUNT OF PLANTING FACES  
THE OCCUPANTS WITH PEACE  
AND TRANQUILITY. THE  
BUILDING DESIGN HAS BEEN  
DEVELOPED ON SIDE OF A  
CLEAR CIRCULATION GRID\*\*\*\*  
WITH FEW MORE PARKING  
LOTS\*\*\* AND A NEWLY  
FORMED SERENE PUBLIC  
SPACE ON THE EASTERN SIDE  
OF THE BUILDING. \*\*\*\*  
BUILDING IS DESIGNED ON  
THE NORTH-SOUTH AXIS  
PROVIDING GOOD LIGHTING  
CONDITIONS DURING THE DAY .

PAGE 2

THERE ARE ENTRANCES ON  
LEVEL 1: FROM OUTSIDE THE  
HOSPITAL;\*\*\*\* FROM THE INNER  
COURTYARD\*\*\*

AND FROM SOUTH AT THE PATIENT  
HOTEL RECEPTION ;\*\*\* ON LEVELS 2  
AND 3 THERE IS SKYWALK JOINING  
THE OLD BUILDING AND THE NEW  
ONE .\*\*\*\* THERE ARE FEW  
SECONDARY ENTRANCES ON LEVEL 1  
ALSO .\*\*\*\* THE ONLY FIXED  
ELEMENTS ARE VERTICAL ACCESS  
POINTS ( ELEVATORS AND BOXED  
STAIRCASES WITH NECESSARY  
EMERGENCY EXITS CLOSE TO THEM.)  
\*\*\*\*AND SERVICES SHAFTS \*\*\*\*

ALL FLOOR LAYOUTS ARE BASED ON  
THE SAME 6000x6000 MM GRID.  
LEVEL 1  
4.DAY CARE UNIT  
GROUND FLOOR PUBLIC SPACES,  
GALLERY \*\*\*\*  
LEVEL 2  
1.RESEARCH UNIT\*\*

2.RECEPTION UNIT\*\*

3.NON-INVASIVE PART\*\*

5.WARDS, 12 ROOMS\*\*

A TOP PRIORITY WAS FOR DAYLIGHT.  
THE WIDESPREAD USE OF COLOUR  
IN THE INTERIORS IS A KEY PART OF  
THE DESIGN. INTERNAL WOOD  
PANELS IN COMMON SPACES, WARM  
COLOURS AND DOMESTIC LIGHTING  
CONTRIBUTE TO THIS HEALTH  
RECOVERING ENVIRONMENT. EVERY  
UNIT HAS RECEPTION AT THE  
ENTRANCE. FOR THE CASE OF  
SECURITY ALSO THE PATIENT  
ROOMS WERE DESIGNED AS  
BEDROOMS NOT WARDS . ALL  
WARDS ARE INDIVIDUAL ROOMS.  
SOME ROOMS HAVE EXPANDED  
AREA . SOME ROOMS HAVE  
BALCONIES, BECAUSE OF VOLUMES  
STICKING OUT OF THE BUILDING .  
EACH ROOM CONTAINS A BIG AREA  
WINDOW.

INSIDE, THE CLINICAL AND CLINICAL  
SUPPORT SPACES ARE SUPPRESSED  
OR HIDDEN TO HIGHLIGHT SPACES  
FOR PATIENTS AND THEIR FAMILIES.  
PRIVATE SPACES AND COMMUNAL  
AREAS ARE BOTH INSIDE AND  
OUTSIDE. THOSE OF ELEVATORS,  
THAT EXPOSE SURROUNDING VIEWS,  
HAVE TRANSPARENT WALLS. IN  
LOTS OF LESSE LOUNGES ARE  
DESIGNED CLOSE TO THE  
ELEVATORS.

PAGE 3

LEVEL 3

7.SURGENT

6.INTENSIVE CARE UNIT

WARDS 23 ROOMS

LEVEL 4

WARDS 32 ROOMS

PAGE 4

LEVEL 5

VENTILATION AND INSTALLATIONS  
THERE ARE CONFERENCE HALLS  
DESIGNED ON LEVELS 6 AND 7 IN  
THE PATIENT HOTEL WING . \*\*\*\*

LOUNGES ARE DESIGNED ON ALL  
PATIENT HOTEL LEVELS IN THE  
MIDDLE AND AT THE SOUTHERN  
PART OF THE WING EXPOSING WIDE  
RANGING VIEWS WITH BIG AMOUNT  
OF PLANTING.\*\*\*\*

LEVEL 6

12 PATIENT HOTEL

12.2 CONFERENCE HALL

PAGE 5

LEVEL 7

12 PATIENT HOTEL

12.2 CONFERENCE HALL\*\*\*\*

ACCOMMODATING A  
CONGREGATION IN AN AREA OF  
110 SQ M , THE CHAPEL IS  
LOCATED ON LEVEL 8.\*\*\*\*  
ALL AREA OF THE UPPERMOST  
LEVEL IS AN UNCOVERED OUTDOOR  
COURTYARD WITH ITS WIDE  
RANGING VIEWS.\*\*\*\*

LEVEL 8

12 PATIENT HOTEL

12.4 CHAPEL

LEVEL 9

ROOF-TOP GARDEN

PAGE 6

SECTIONS: BUILDING HAS FIVE ( 21.5M ) AND EIGHT STORIES IN  
HEIGHT ( 3.5 M ).\*\*\*\* SKYWALK IS  
ONLY ON LEVELS 2 AND 3,  
BECAUSE OF THE HEIGHT  
DIFFERENCES IN NEW BUILDING  
AND THE OLD ONE ACCORDING TO  
SANITARY INSTALLATIONS AND THE  
MAIN INFRASTRUCTURE DUCTS  
ABOVE THE UNITS.\*\*\*\*  
VENTILATION SHAFTS ARE CLOSE  
TO VERTICAL ACCESS POINTS.\*\*\*\*

PAGE 7

ELEVATIONS: WINDOWS HAVE BEEN  
POSITIONED TO LINE UP WITH  
6000 MM GRID. THE FACADES  
HAVE ALSO BEEN DESIGNED TO  
ALLOW FLEXIBLE WALL POSITIONS  
EVERY 1.5M IN THE CORRIDORS.  
THE FACADES ARE DEAD IN WHITE  
PLASTER, WOODEN PANELS AND  
CURTAINWALL. THEY HARMONIZE  
WITH BUILDING'S NATURAL SETTING  
AND ARE CONTRASTING WITH THE  
PREDOMINANT LOCALLY PRECAST  
CONCRETE OF THE OLD BUILDING.

PAGE 8

VISUALIZATIONS

FINAL INFO

HOSPITAL

LEVELS 1-5

AREA 20425 M2 + 4085 M2(5)K

+2 UNDERGROUND)

PATIENT HOTEL

LEVELS 6-8

AREA 5892 M2

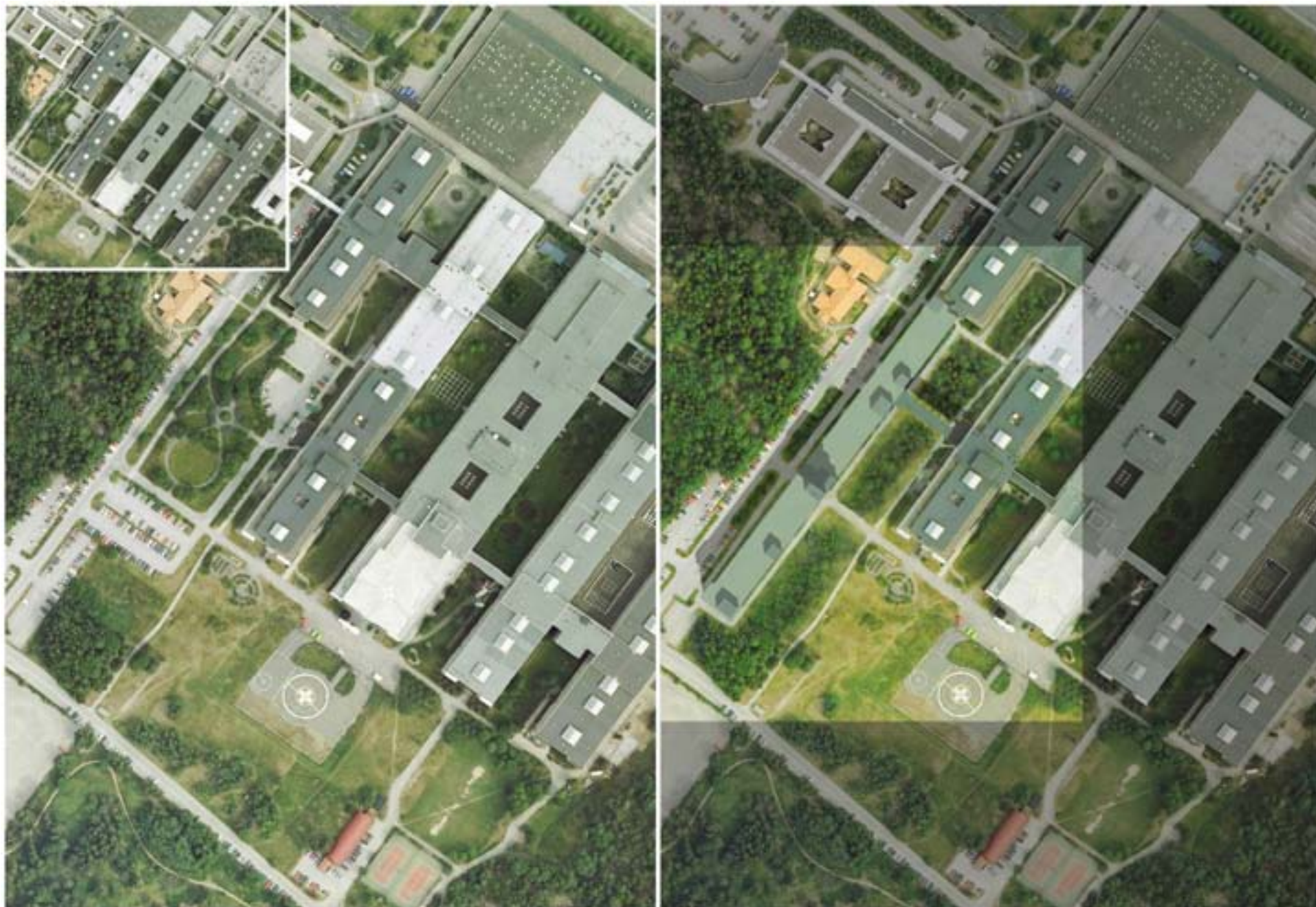
ROOMS 90

THERE ARE 18 ELEVATORS ON  
LEVELS 1-6 AND 7 ELEVATORS ON  
LEVELS 7-9.

VENTILATION SHAFTS (

205.68M2)

TOTAL FLOOR AREA 26017 M2



CHALMERS ARCHITECTURE - SPACE FOR HEALTHCARE, HOUSING & WORK - NEW KAROLINSKA HUDDINGE HOSPITAL - A.JODKO - TEACHERS P.FRÖST,I.MALMQVIST,B.GROSS 1

